

Model F-501-W Resilient Wedge NRS Gate Valve

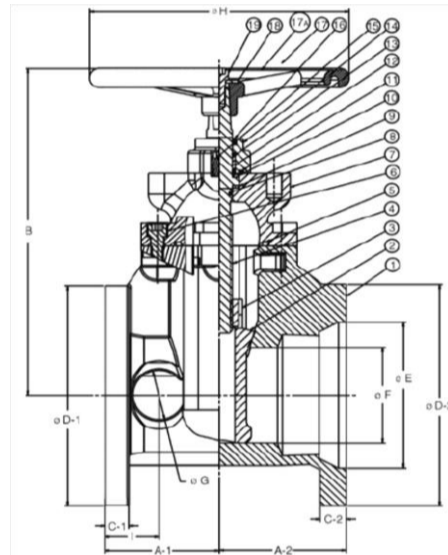
Technical Features

- 300 PSI/20.1 Bar non-shock cold working pressure
- Non-rising stem , Resilient wedge, Bolted bonnet
- Conforms to AWWA C509, Flanged end connections
- Size range 2-1/2" to 10"
- Size range 12" to 16" 250 PSI/ 17.2 Bar



MATERIAL LIST

PART	SPECIFICATION
1.Valve Body	Ductile Iron ASTM A 536
2.Resilient Wedge	Ductile Iron ASTM A 536/EDPM ASTM D 2000
3.Wedge Nut	Bronze ASTM B 584 UNS C83600
4.Stem	4"-16" ASTM B584 UNS C92200 2"-3"
5.Bonnet Gasket	Bronze ASTM B 150 UNS C61400
6.Bonnet Screw	EDPM ASTM D 2000
7.Bonnet	Alloy Steel ASTM A 574M Zinc Plated
8.Stem Primary O-Ring	Ductile Iron ASTM A 536
9.Stem Thrust Washer(lower)	EDPM ASTM D 2000
10.Stem Thrust Washer(upper)	Bronze ASTM B 584 UNS C83600
11.Gland Seal O-Ring	Stainless Steel ASTM A 276 UNS S41000
12.Stem Seal Bushing	EDPM ASTM D 2000
13.Stem Secondary O-Ring(2)	Bronze ASTM B 584 UNS C83600
14.Gland Flange	EDPM ASTM D 2000
15.Gland Flange Screw	Ductile Iron ASTM A 536
16.Stem Ringer Wiper	Alloy Steel ASTM A 574M Zinc Plated
17.Square Operating Nut	EDPM ASTM D 2000
17A. Handwheel (Optional)	Cast Iron ASTM A 126-B
18.Flat Washer	Ductile Iron ASTM A 536
19.Screw	Carbon Steel Zinc Plated
	Alloy Steel ASTM A 574M Zinc Plated



DIMENSIONS---WEIGHTS---QUANTITIES

Size	Dimensions														Bolt Circle	Flange Holes	Turns to Open	Weight			
	A	B	C	D	F	G	H	In	mm	In	mm	In	mm	In				mm	Lbs	Kg	
2 1/2	65	7.5	190	11.3	287	0.69	17.5	7.0	178	1.50	38	1.6	40	7.9	200	5.50	140	4	8.8	35	16
3	80	8	203	12.6	321	0.75	19	7.5	191	1.73	44	2.1	54	10.2	260	6.00	152	4	10.6	45	20
4	100	9	229	13.5	344	0.94	24	9.0	229	2.13	54	2.1	54	10.2	260	7.50	191	8	3.0	71	32
6	150	10.5	267	17.4	441	1.00	25.4	11.0	279	2.24	57	2.5	64	14.8	375	9.50	241	8	15.6	122	55
8	200	11.5	292	20.8	529	1.13	28.6	13.5	343	2.48	63	2.8	70	14.8	375	11.75	298	8	17.3	196	89
10	250	13	330	24.2	614	1.19	30.2	16.0	406	2.56	65	2.8	70	15.7	400	14.25	362	12	21.4	294	134
12	300	14	356	27.6	700	1.25	31.8	19.0	483	2.91	74	3.4	86	19.7	500	17.00	432	12	25.3	426	194
14	350	15	381	31.8	807	1.38	35	21.0	533	2.95	75	3.1	80	19.7	500	18.75	476	12	44	600	273
16	400	16	406	34.1	869	1.46	37	23.5	597	3.00	77	3.1	80	19.7	500	21.25	540	16	50	810	369